

●Part Number Guide

T-FF.FFFK-LC-FT-OT-ESR-TR-S

T(Type 型号): W=1×5 Tuning Fork

F(Frequency 标称频率):

LC(Load Capacitance 负载电容):12.5=12.5pf 00=series, etc

FT(Frequency Tolerance 调整频差):30=±30ppm, etc

OT(Operating Temperature 工作温度):1060=-10℃ to +60℃ 4085=-40℃ to +85℃, etc

ESR(Equivalent Series Resistance 等效阻抗)

TR(Tape and Reel 编带)

S(Special Requirement 特殊要求)

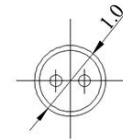
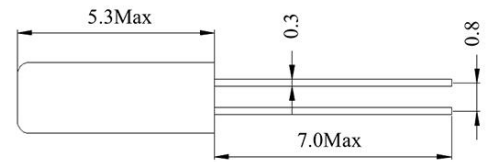


●Electrical Specifications 电气参数

型号	Holder Type	Turning Fork 308(KHz)
频率范围	Frequency Range	32.768KHz
调整频差	Frequency Tolerance (ΔF) (at25℃)	±20ppm
频率温度系数	Parabolic curvature constant	-0.04ppm±0.006ppm/°C ² (TYP.)
工作温度范围	Operating Temperature Range	-10℃~+60℃
储存温度范围	Storage Temperature Range	-40℃~+85℃
老化	Aging (25℃)	±5ppm/Year Maximum
静电容	Shunt Capacitance (C0)	5pF max (TYP.)
动电容	Motional Capacitance(C1)	3.5fF Typical
激励功率	Drive Level	1uW ~ 10uW
绝缘阻抗	Insulation Resistance (Rs)	500 Mega ohms Minimum at D.C100V
负载电容	Load Capacitance (CL)	Suggested by customer

• Mechanical Dimensions外型尺寸

UNIT(单位):mm(毫米)



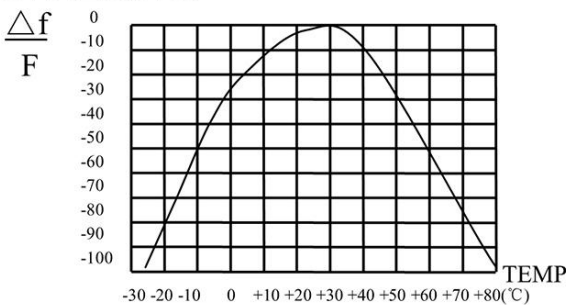
●Equivalent Series Resistance and Mode of Operation

等效阻抗和振荡模式

Frequency Range 频率范围	ESR (Ω) 等效阻抗
30.000-40.000 KHz	40K Max

●Frequency vs. Temperature Curve

频率温度曲线



• Reflow Condition 回流焊条件

