

● Part Number Guide

T-M-FF.FFFM-LC-FTFS-OT-ESR-TR-S

T(Type 型号): F=UM - 1 Filter

M(Mode of Operation 振荡模式): F=Fundamental T=Third Overtone, etc

F(Frequency 标称频率): Normal - 5 digitals of Frequency, e.g. 8.0000M, 12.000M

Special - All digitals of Frequency, e.g. 13.225625M

LC(Load Capacitance 负载电容): 20=20pf 00=series, etc

FT(Frequency Tolerance 调整频差): 30=±30ppm, etc

FS(Frequency Stability 温度频差): 50=±50ppm, etc

OT(Operating Temperature 工作温度): 1060=-10°C to +60°C 4085=-20°C to +70°C, etc

ESR(Equivalent Series Resistance 等效阻抗)

TR(Tape and Reel 编带)

S(Special Requirement 特殊要求)

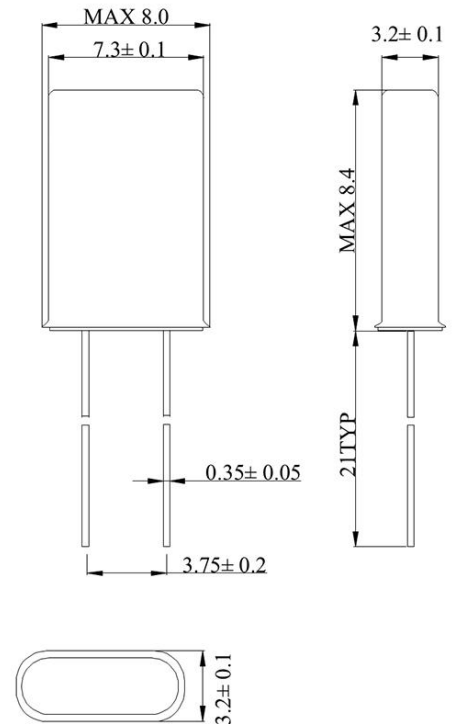


● Electrical Specifications 电气参数

型号	Holder Type	HC-49U/S
频率范围	Frequency Range	3.500 ~ 160.000 MHz
调整频差	Frequency Tolerance (ΔF) (at 25°C)	±5ppm to ±50ppm (TYP.)
温度频差	Frequency Stability	±5ppm to ±50ppm (TYP.)
工作温度范围	Operating Temperature Range	-10°C ~ +60°C to -20°C ~ +70°C
老化	Aging (25°C)	±5ppm/Year Maximum
静电容	Shunt Capacitance (C0)	7pF Maximum
激励功率	Drive Level	0.1uW ~ 1000uW (TYP.: 100uW)
绝缘阻抗	Insulation Resistance (Rs)	500 Mega ohms Minimum at D.C100V
负载电容	Load Capacitance (CL)	8pF ~ 32pF, series or special

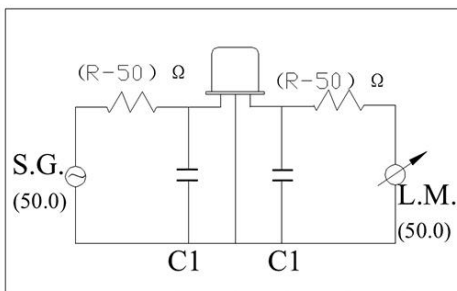
● Mechanical Dimensions 外型尺寸

UNIT(单位): mm (毫米)

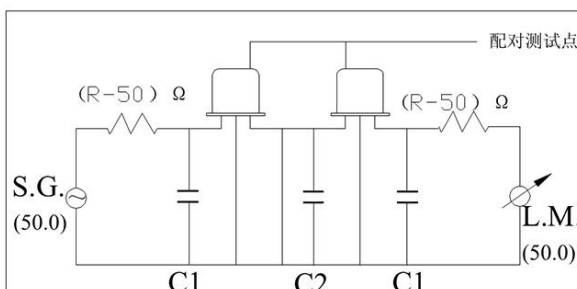


• Test Circuit 测试电路

• Test Circuit (2 Poles) 测试电路(2引脚)



• Test Circuit (4 Poles) 测试电路(4引脚)



• Reflow Condition 回流焊条件

